

3 STOREY SHOP OFFICE

FROM  
RM **310,000**\*\*  
\*\* 10% Discount for Bumiputra  
FREE LEGAL FEES  
ON SPA\*

# In A Well Established Township With Over 40,000 Population



\*\*Subject to terms and conditions.

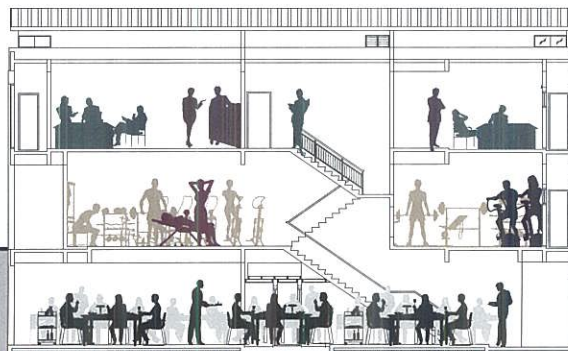


**PRISTANA**  
Business Centre

**OPEN FOR  
REGISTRATION**

## A Great Investment Opportunity Not To Be Missed!

- **Easy accessibility to highways & expressways.**
  - Jalan Kepong - Kuala Selangor
  - Guthrie Corridor Expressway (GCE)
  - Shah Alam - Batu Arang Highway
  - KL - Kuala Selangor Expressway (LATAR)
  - New Klang Valley Expressway (NKVE)
- **Prime location with heavy traffic flow.**
- **UiTM Puncak Alam in the vicinity with eventual enrollment of 20,000 students.**



Artist Impression

# DUAL FRONTAGE

# Site Plan



## Location Map

N 3° 12' 41.2204" E 101° 28' 16.86"

- 20 km to Shah Alam
- 15 km to Bandar Baru Sungai Buloh
- 5 km to UITM, Puncak Perdana
- 2km to UITM, Puncak Alam



## For Registration

016-211 4228 / 016-207 6075 / 03-5512 8989

marketing@pristana.com www.pristana.com.my

A Project by:



Developer: **Seristana Sdn Bhd** (1162900-K)  
 Sales Office: No. 30-D, 4th Floor, Block 2,  
 Worldwide Business Centre, Jalan Tinju 13/50,  
 Section 13, 40675 Shah Alam, Selangor.  
 Tel: 03-5512 8989 Fax: 03-55107887

[1] The developer has obtained development order. [2] The developer reserve the right to make adjustments, variations, additions or changes to the development plans including the building plans, sub-division plan and any other plans in connection with the proposed development project; and [3] the proposed development project is indicative only.

The information contained in this insert is subject to change without notification as may be required by the relevant authorities or recommended by the Architects or Engineer and cannot form part of an offer or contract. All renderings are artist's impression only. All measurements are approximate. Whilst every reasonable care has been taken in providing this information, the developer, owner and manager cannot be held responsible for any inaccuracy. All the above items are subject to variations, modifications and substitutions as any be required by the Authorities or recommended by the Architects or Engineer. \*For panel solicitors only.